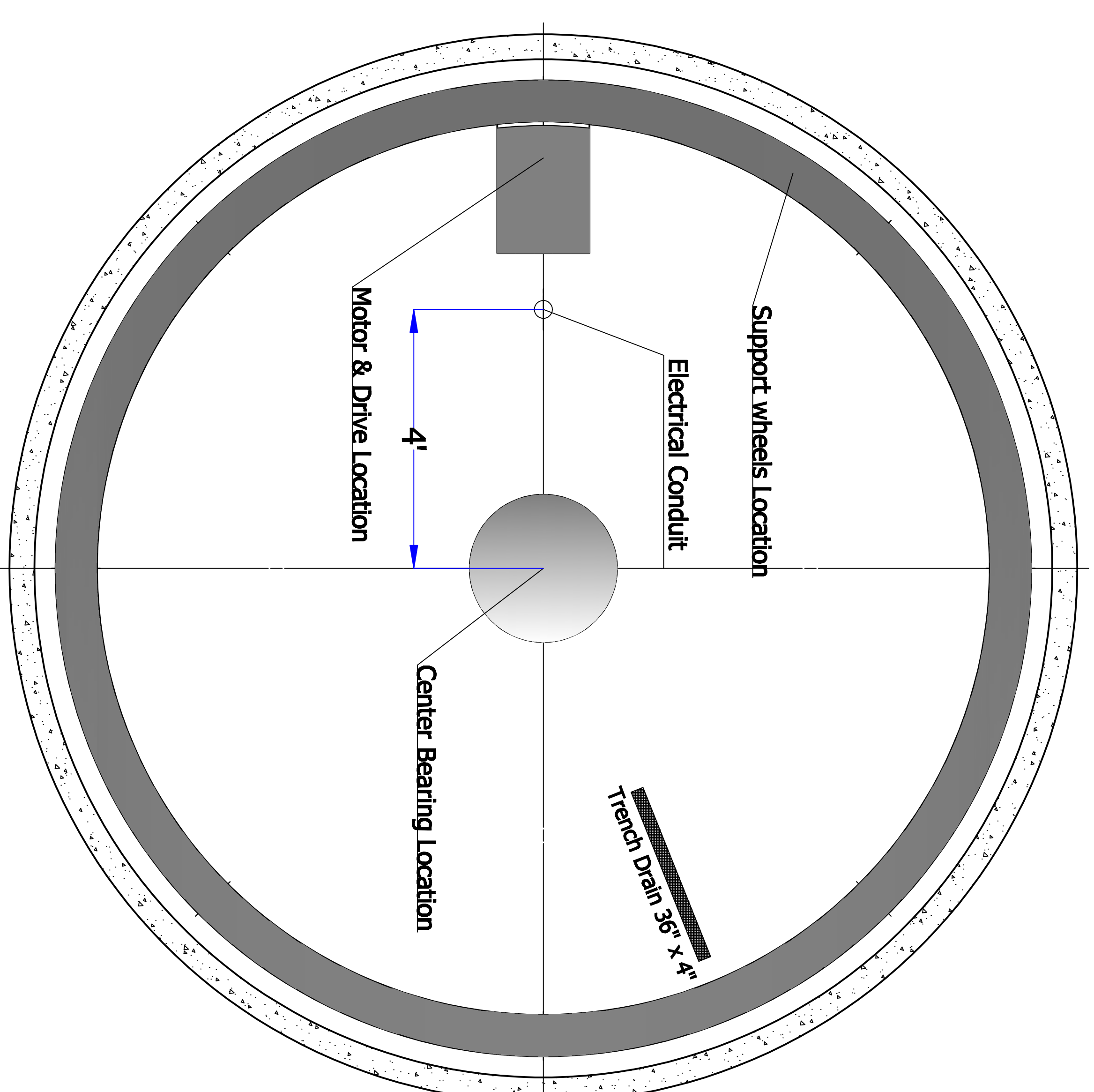
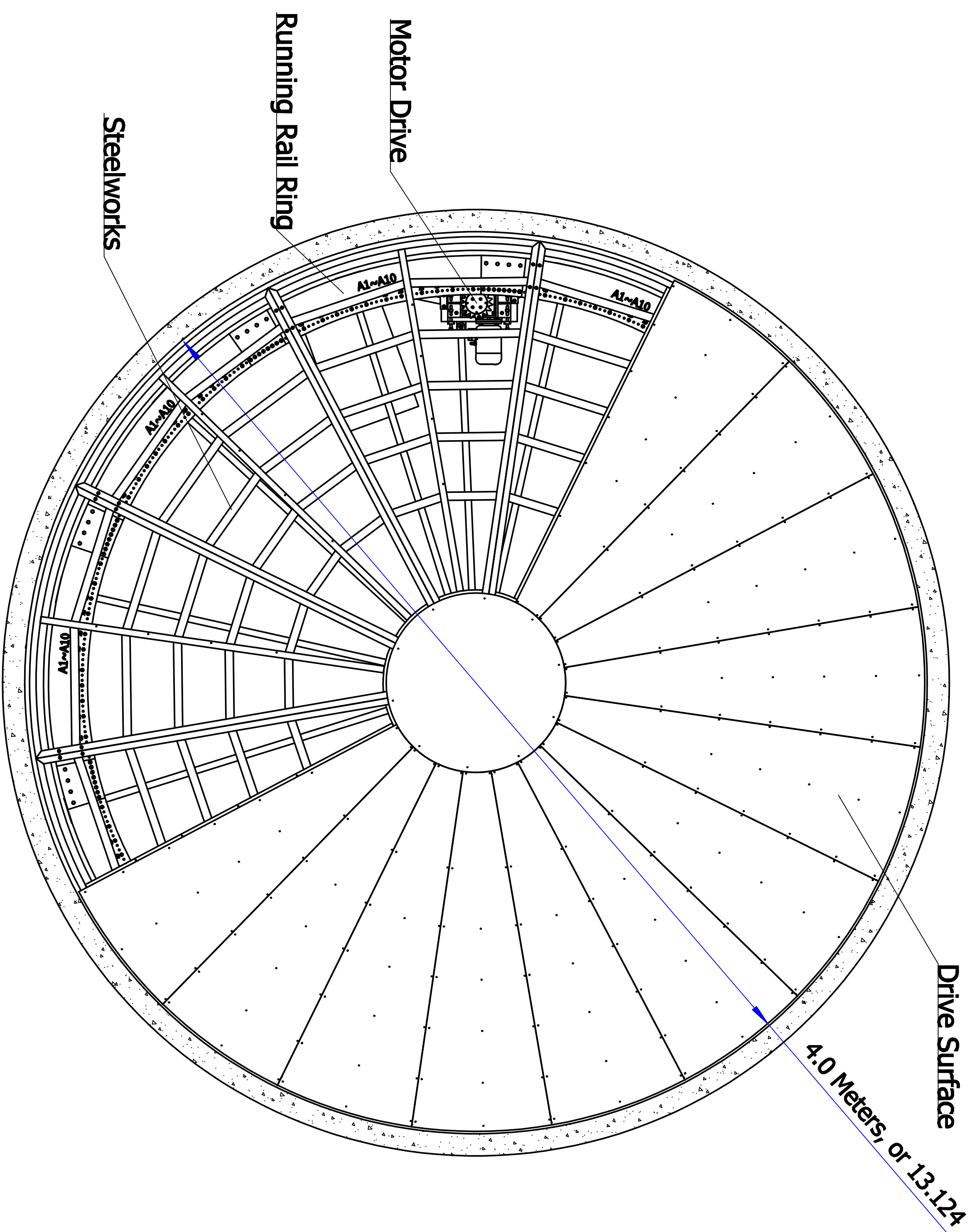
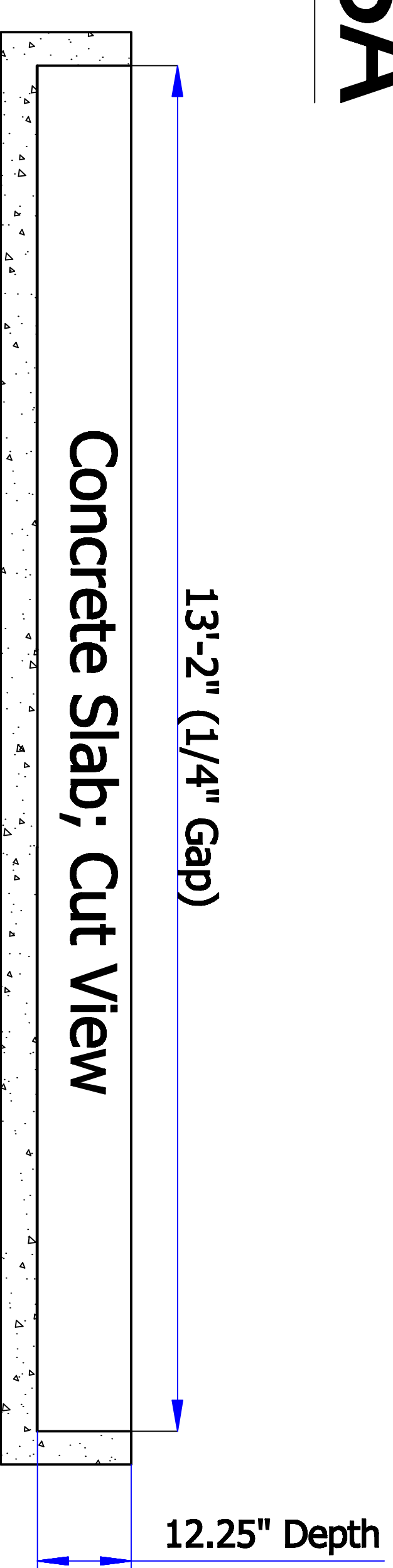
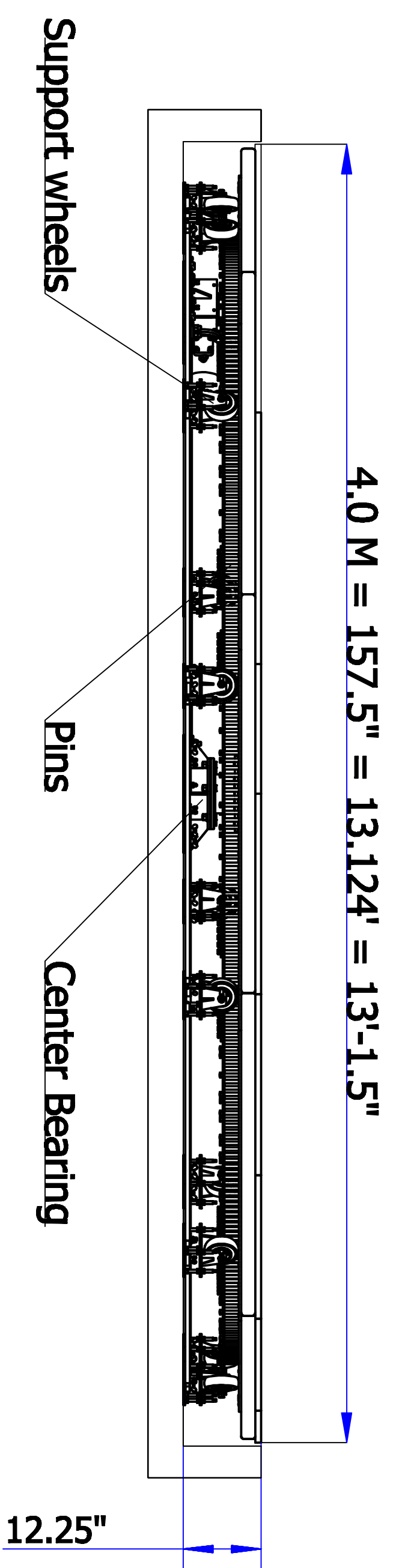


Carousel USA



Turntable Specifications

1. Height: 12.25" \pm 1/4"
3. Rotation Speed: 0.2~1RPM (variable, forward and reverse).
4. Power required: 220-230V, 15 Amps, single-phase.
5. Motor: 1 H.P., 3 Phase, T.E.F.C.
6. All ferrous metals are coated with rust resistant paint, hot-dipped Zinc is optional
7. Top Surface: Aluminum is standard, other surfaces available.

Pit Specifications

1. Pit to be formed in concrete.
2. Base of pit to have flatness error of less than .50"
3. Error of circularity of outer diameter of pit to be less than .50"
4. Weight of the turntable is approximately 3400 lbs.
5. Dark shaded areas above bear the majority of loads.
6. Drainage: use 36" of *Zurn Z884* 4" wide trench drain or similar.

REVISIONS

NO.	DATE	BY	DESCRIPTION

DRAWN	SS
CHECK	SS
APPROVED	JT
DATE	02/06/2007
PROJECT	XXXXXXXXXXXX

MODEL 40
Table Specifications

M-40