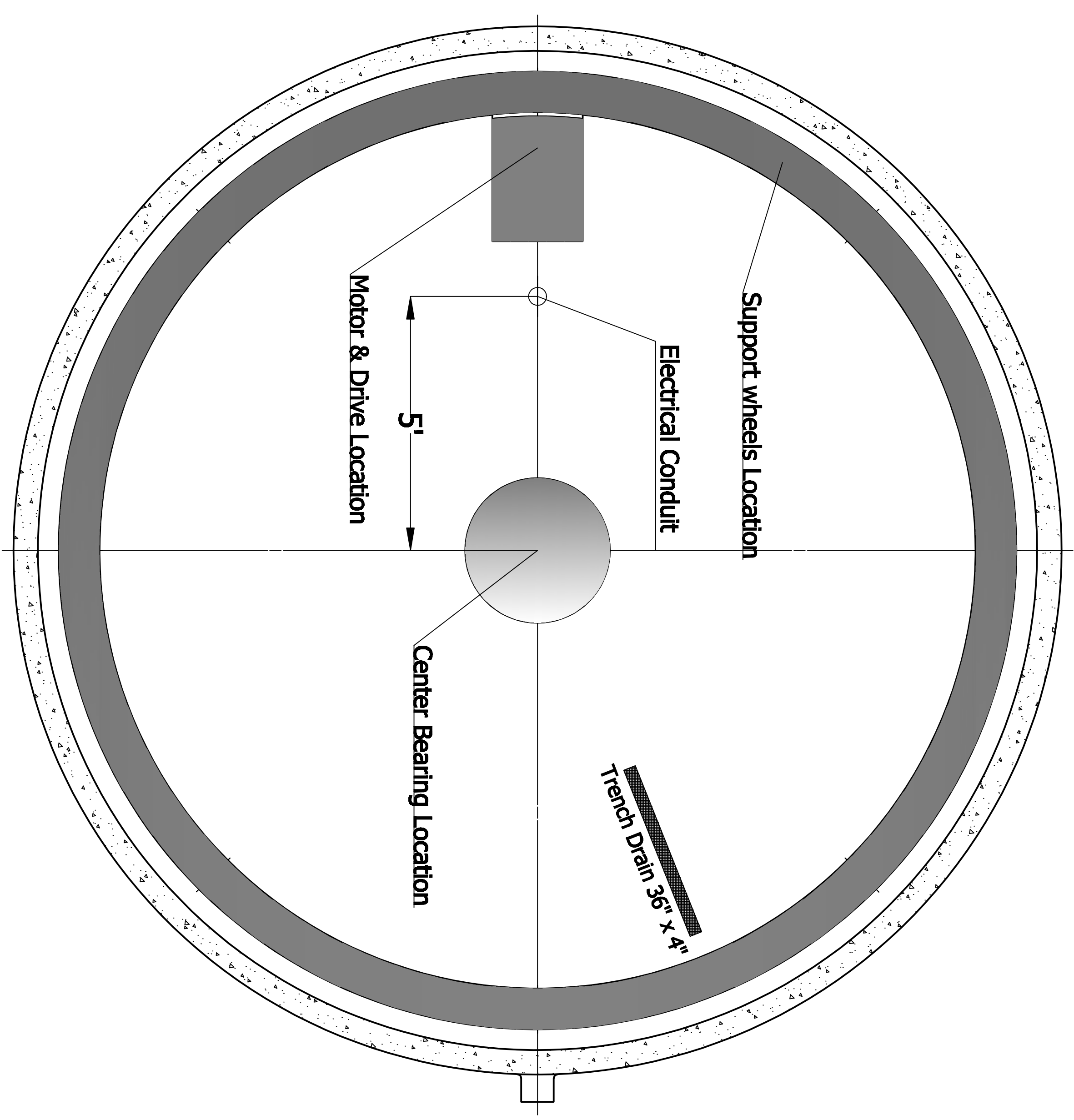
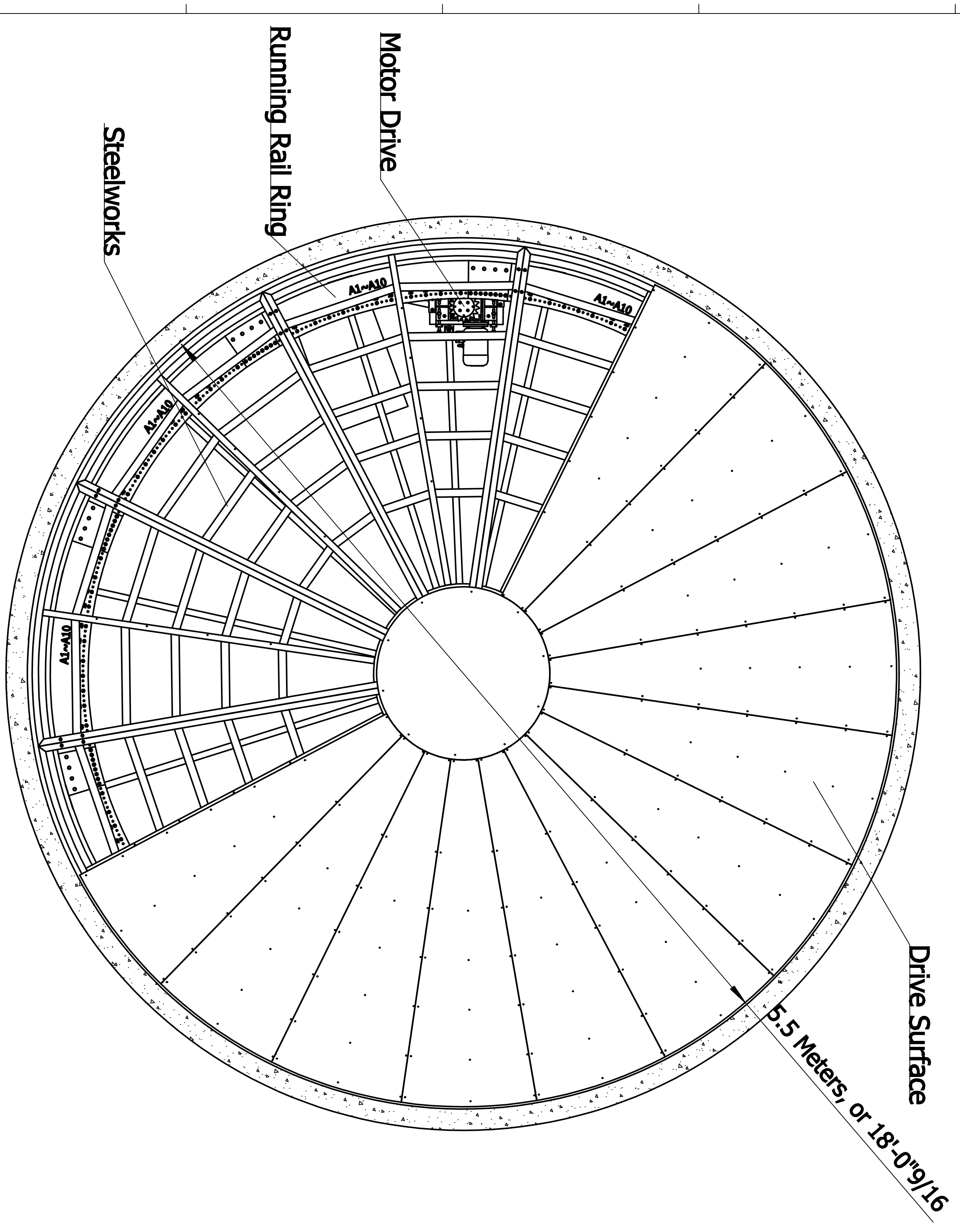
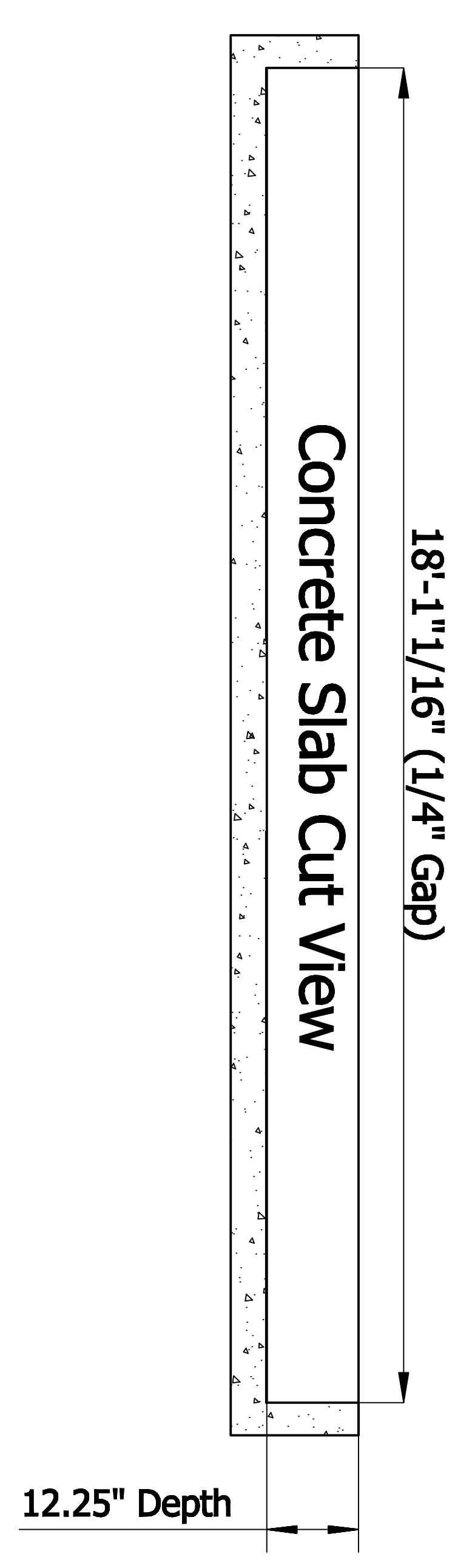
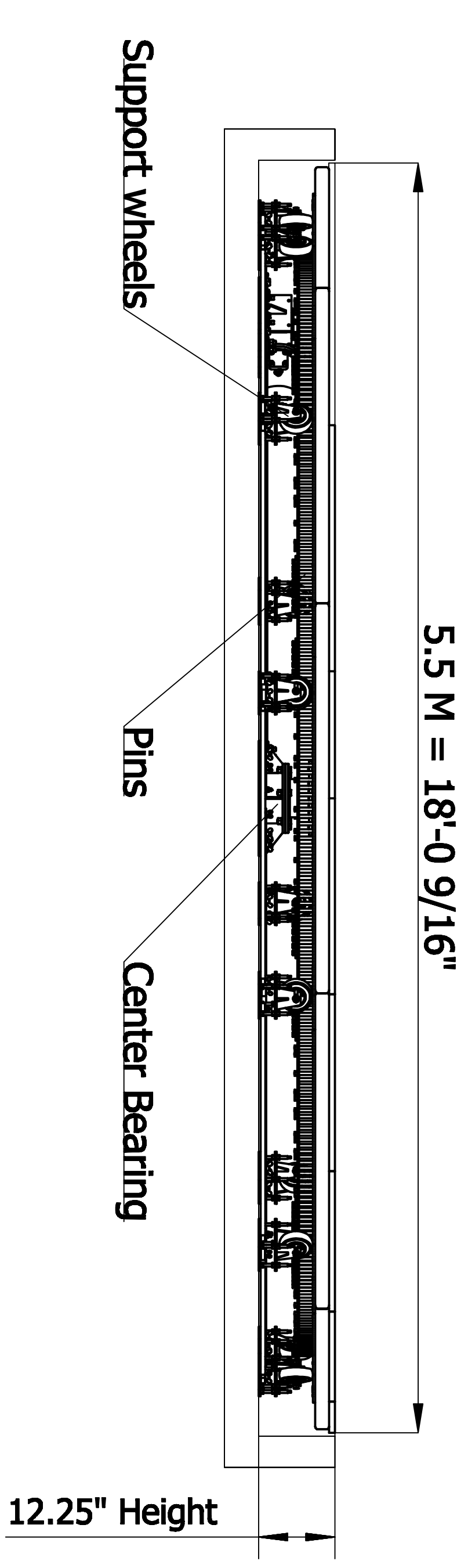


Model 55



Turntable Specifications

1. Height: 12.25, ± $\frac{1}{4}$ "
2. Capacity: 10,000 lbs, evenly distributed.
3. Rotation Speed: 0.2~1RPM (variable, forward and reverse).
4. Power required: 220-230V, 15 Amps, single-phase.
5. Motor: 1 H.P., 3 Phase, T.E.F.C.
6. All ferrous metals are coated with rust resistant paint, hot-dipped Zinc is optional
7. Top Surface: Aluminum is standard, other surfaces available.

Pit Specifications

1. Pit to be formed in concrete.
2. Base of pit to have flatness error of less than .50"
3. Error of circularity of outer diameter of pit to be less than .50"
4. Weight of the turntable is approximately 5500 lbs.
5. Dark shaded areas above bear the majority of loads.
6. Drainage: use 36" of *Zurn Z884* 4" wide trench drain or similar.

ALL IDEAS, DESIGN ARRANGEMENTS AND PLANS INDICATED OR REPRESENTED BY THIS DRAWING ARE OWNED BY AND THE PROPERTY OF CAROUSEL USA AND WERE CREATED, EVOLVED, AND DEVELOPED FOR USE ON AND IN CONNECTION WITH THE SPECIFIED PROJECT. NONE OF SUCH IDEAS ARRANGEMENTS OR PLANS SHALL BE USED BY OR DISCLOSED TO ANY PERSON FIRM OR CORPORATION FOR ANY PURPOSE WHATSOEVER WITHOUT THE WRITTEN PERMISSION OF CAROUSEL USA.

NO.	DATE	BY	CHKD.	APP'D.	REVISIONS
1	09/11/2007	JT	SS		
2					
3					
4					
5					
6					
7					
8					

MODEL 55
 TURNABLE

M-55